



MICROFLEX[®] MXP-3 WALL MOUNT CONFERENCING LOUDSPEAKER

OVERVIEW

Passive wall mount loudspeaker for speech and program audio reproduction in meeting rooms employing enhanced spatial audio. Microflex Conferencing Loudspeakers are designed for conferencing with clear, intelligible audio.

FEATURES

- Innovative Balanced Mode Radiator (BMR) driver is voiced specifically for speech intelligibility in conferencing and meeting applications
- Wide dispersion for complete room coverage and consistent sound quality for every listener
- Flat-disc diaphragm provides more natural sound than conventional cone-shaped diaphragms and a more compact size
- Eliminates the need for a crossover in the critical 1-3 kHz speech frequency range and delivers sound from a single point source for maximum clarity
- Up to four MXP-3 loudspeakers can be used with the MXN-AMP PoE+ multichannel amplifier
- Compact design with only 2.5-inch depth can be wall mounted horizontally or vertically, or on-ceiling with included mounting hardware. (Note: Shure recommends the use of an additional safety tether for overhead components.)
- Available in black or white finish, paintable to match room décor
- Seamless connectivity and compatibility with popular collaboration platforms, including Microsoft Teams and Zoom

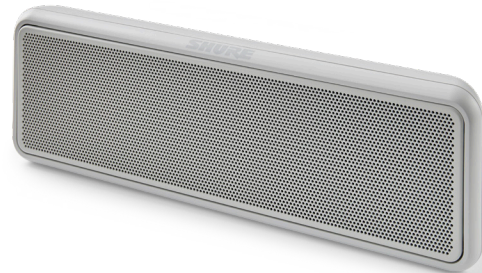
SPECIFICATIONS

(subject to change) All specifications are within ± 3 dB unless otherwise noted.

Frequency Response (-3 dB)	~120Hz - 20kHz
Nominal Impedance	4 Ω
Coverage Angle	98°
Maximum SPL	AES75 max linear sound levels: 89 dBZ, 108 dBZpk, 89 dBA
Sensitivity	82 dB SPL 1W/meter
Connector Type	2-pin connector, 0.2 in. (5.08 mm) pitch, Jiekle 2EDG-5.08 V/R
Maximum Input Power	10W
Weight	1.34 lbs (0.61 kg)
Product Dimensions	11.2 x 3.5 x 1.9 in. (283.8 x 90 x 48.5 mm)
Operating Temperature Range	-7 to 40°C (19.4 to 104°F)



MXP-3B
Wall Mount Conferencing Loudspeaker
BLACK



MXP-3W
Wall Mount Conferencing Loudspeaker
WHITE